

# RMCMI Reporter

August 2013

1912-2013 Celebrating 101 Years

2013 Post Conference Newsletter

## President's Message



**President  
Brad Lewis**  
*ADDCAR Systems*

What the long timers told me was spot on, your year as President will go fast. That was precisely my experience. My only regret is that I wish I would have had more time to do more.

Last year, I announced that during my term as president, my main focus would be on **Proudly Promoting Western Coal** – which was also to be the theme for our 2013 convention. We made a lot of progress in finding out (mostly via face to face meetings) how **Friends of Coal** has succeeded in the east so that we can mimic their success in the west. We have completed most of the legal and administrative matters, the **Friends of Coal** web site is up and running and we hosted a well attended Friends of Coal reception at the SME annual convention. Thanks to all who have contributed to this initiative.

The 2013 convention speakers knocked it out of the park relative to sharing their experiences and knowledge on how to communicate the coal message positively, as well as how to move forward in the industry in spite of the relentless regulatory and

political challenges. Thanks to all who contributed to the program.

Attendance at our regional meetings was down from previous years. The state of the coal industry was a factor. Even so, the speakers at the regional meetings were exceptional.

RMCMI's financial bottom line is in the black and slightly up from previous years. The quest for new members remains a tall task – please do what you can to bring in a member. Personal invitations are still the most effective sales approach to membership. Our investment portfolio is performing nicely in line with overall stock market indices. We updated our Investment and Financial Policies to reflect the current business environment.

The outlook for the industry is somewhat better today than it was last year at this time. Safety and public relations still need to be our primary focus.

It was an unforgettable honor and privilege to serve the RMCMI members this past year and to work with the Board of Directors and Judy in leading the organization. Regardless of where life leads from here, I will always be an RMCMI member and supporter. Wishing life's best to you and your families.

## Letter from the Executive Director

What a successful meeting in Steamboat Springs!

After our 100th Anniversary meeting in Vail, I was concerned the following

meeting might have fewer in attendance. Thanks to all of you for keeping us strong! We had over 500 attendees, who all enjoyed the activities and beauty of the Yampa valley.

Our slate of speakers was one of the strongest I have seen at any meeting in quite some time. I was encouraged to hear positive messages about the industry, and how to get the message to the masses that coal is here to stay.

The Mine Rescue evaluation part of our meeting continues to grow and provide additional unique opportunities. We are proud to continue our mission of education by providing opportunities to these very important teams who work tirelessly to keep their skills strong in the event they are called into action. **David & Cheryl Evans** are an amazing team, and we are grateful to have them as part of RMCMI.

I look forward to the upcoming year with our **Friends of Coal West** initiative, and further outreach to other groups to continue to grow the Institute. As we learned, word of mouth is our most powerful tool. Please encourage others to join and become a part of our outstanding group dedicated to the industry that we all care so much about.

To those who have given your feedback and encouragement, thank you. If you have any comments or suggestions on how we can improve our meeting each year, please contact me at the RMCMI office. We are "moving on up"!



**Judy Colgan**



# Mine Rescue

*Sponsored by The North American Coal Corporation,  
Strata Worldwide, LLC and Westmoreland Coal*

Ten teams participated this year in the 22nd Annual Mine Rescue Evaluation. This program is an integral part of our annual conference, and continues to be co-chaired by **David Evans**, Texas Westmoreland Coal and **Cheryl Evans**, EMR Health & Safety. Words cannot express our appreciation to them for the amazing job they do each year.

This year included additional training in a confined space trailer, and the popular “Guts and Gore” class, which used pig lungs and hearts to demonstrate respiration sounds and techniques.



David & Cheryl Evans



The Tuesday morning awards breakfast, sponsored by **Strata Worldwide, LLC** concluded the mine rescue events. **North American Coal** sponsored the rescue evaluation events, and **Westmoreland Coal Company** sponsored the Monday family lunch once again.

## 2013 Evaluators:

Dan Allerdings, Bill Brown, Jerry Bonds, Terry Davis, David & Cheryl Evans, Danny Graham, Brad Holligan, Kristine Kern, Toni Morton, Charles Pankonien, Robert Paslay and Willis Proctor.

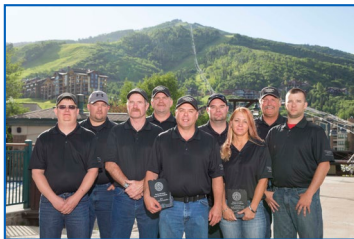
## 2013 Participating Teams



BHP Navajo



BHP San Juan



Coteau Properties



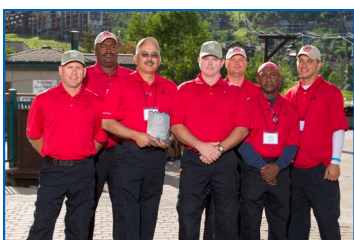
Dakota Westmoreland



Falkirk Mining



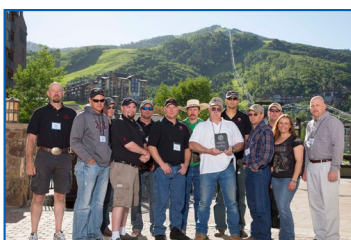
Solvay Chemicals



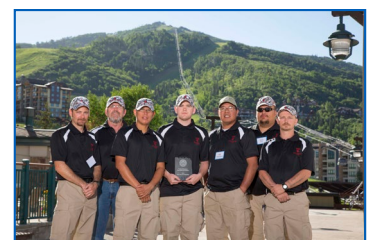
Texas Westmoreland



Western Energy



Westmoreland Kemmerer



Westmoreland Resources





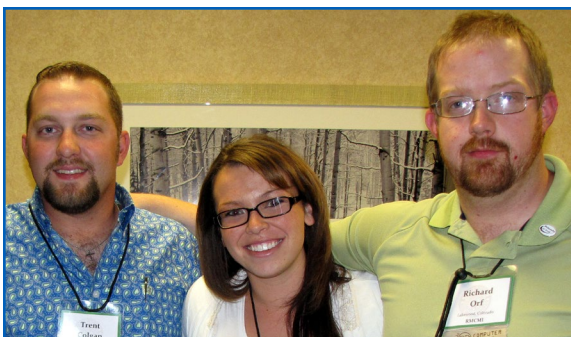
Mine Rescue 2013



## Welcome Reception

*Sponsored by Millcreek Engineering,  
PacifiCorp and Savage Services*

225 people enjoyed greeting each other at the Welcome Reception on Sunday evening. This event provides a great opportunity to network and greet friends and colleagues before the meetings begin on Monday. Brad Murphey and Sam Jones, one of Colorado's premier bluegrass duos, provided entertainment for the evening.



A huge thank you to the RMCMI conference staff for all their efforts and great attitude during a crazy week.

Pictured: Trent Colgan, Chelsey Wilson and Richard Orf.



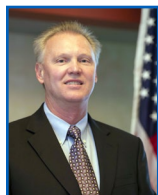
## The Technical Sessions

The Technical Sessions offered an outstanding group of speakers with an encouraging message to the group. A full house was energized and inspired to promote our industry and bring it forward to a healthy and thriving industry once again, in spite of continued challenges. *These presentations will be available on the website.*



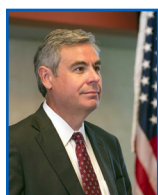
### **The Role of Coal Based Energy in Human Development**

**Frank Clemente**, *Professor Emeritus*, Penn State University



### **Energize, Empower and Advocate: Leadership in 21st Century Coal**

**D.L. Lobb**, *Chief Operating Officer-Americas*, Peabody Energy



### **All the Arrows in the Quiver**

**Mark Crosswhite**, *Chief Operating Officer*, Southern Company



### **Coal 2035 – The Future of Coal**

**Jason Hayes**, *Associate Director*, American Coal Council



### **Owner Value Interest**

**Joseph Nuccio**, *Vice President* Minerals-Americas, KBR



### **15th Annual Safety Award Presentations**

**Gary Learning**, RMCMI Safety Chair



### **A Process, Not a Program**

**Kent Salitros**, *President*, Western Energy Comp



### **It's A Coal World After All, But is it Still Coalorado?**

**Stuart Sanderson**, *President*, Colorado Mining Association



### **Friends of Coal:**

#### **A Success Story**

**Bill Bissett, David Moss, Brian Patton**, Kentucky Coal Association



### **Update on EPA's Continued Attack on Coal**

**Mike Nasi**, *Partner*, Jackson Walker, LLP



### **Building A Coal Terminal in the Green Zone, 2013 Update**

**Ken Miller**, *President*, Longview Port  
**Kristen Gaines**, *Vice President* Environmental Planning & Services, Longview Port



### **Talking About Coal Exports in the Pacific Northwest: Public Opinion, Outreach and Effective Messaging**

**Bruce Gryniewski**, Gallatin Public Affairs



### **Stakeholder Listening and Analysis in the Age of Social Media**

**Sean Dessureault**, *Associate Professor* University of Arizona



### **Coal Mine Methane Conversion Project**

**Mike Ludlow**, *Executive Vice President*, Oxbow Mining, LLC



### **Changing Coal Delivery at Hayden Station**

**James Newcomer**, *Project Manager*, CDG Engineers  
**John Pierce**, *Principal Engineer/Project Manager*, Xcel Energy



## Safety Awards

**Gary Leaming**, Safety Manager, Arch Coal and RMCMI Safety Chairman presented the 15th Annual Safety Awards. The awards are determined by MSHA data that is carefully reviewed. The contractor safety award is by nomination, and awarded to the company with the best safety record and most hours.

The winners were:



Large Operator Surface Mine  
*Buckskin Mine*  
*Kiewit Mining Group, Inc.*



Large Operator Underground Mine  
*Sufco Mine*  
*Canyon Fuel Company, LLC*



Contractor Safety Award,  
*Benchmark Industrial Services*  
*Kilgore, Texas*



Small Operator Surface Mine  
*Coal Creek Mine*  
*Thunder Basin Coal Company*



Small Operator Underground Mine  
*Dugout Canyon Mine*  
*Canyon Fuel Company, LLC*

## In Memoriam

We regret to inform you that **Bill Hill**, RMCMI member and long time mining consultant, passed away in May, 2013. He will be missed by all of his colleagues. Our condolences to the Hill family.

**Jim Evans**, who served as Executive Director of the Associated Governments of Northwest Colorado for 25 years, passed away in May, 2013. Condolences can be sent to **Marci Evans**, 2660 Brodie Lane, Crestview, FL 32536.



**Bill Hill**





## ROCKY MOUNTAIN COAL MINING INSTITUTE 29th Annual Scholarship Luncheon

*Sponsored by*  
**Peabody Energy Co., Rimpull Corporation, Salt River and Trapper Mining Inc.**

Six students were in attendance to receive their scholarship awards at the annual luncheon. Kendal Bergman, Alyssa Brown, Ashlyn Hooten, Kaitlyn Martin, Joey Micheletti, and Blake Parks. Curt Belden presented the awards to the students, and each took a few minutes to thank the group and express why mining is the career they have decided to pursue. Curt Belden and Bob Burnham interviewed over 50 students to narrow down the choices to the 18 that were awarded the honor this year. Clark Moseley continues to do a great job as our Patron Chairman - those contributions providing the funding for these young people to continue their education. The Scholarship Luncheon is one of the favorite events of the annual meeting.





## Monday Night BBQ

*Sponsored by: Cloud Peak Energy,  
DSI Underground Systems, Inc. and McLanahan Corporation*

Approximately 500 members and their families participated in the Monday Night BBQ events. Dinner was served in the pool tent, and then we moved to Gondola Plaza for fun events and dancing. Bobby Cutshaw provided music for our dancing and listening pleasure. A dance class that was held on Sunday by our own Bill and Charlene Kendall encouraged more dance participation than ever!





## Auction to benefit Scholarship Fund a Huge Success!

The silent and live auctions were once again a highlight of this year's activities. The auction resulted in almost \$20,000 for the scholarship fund! Sincere thanks to those who donated their goods and services to this very worthy cause. A special thank you to our auctioneer, **Scott Forke**, for helping us out again this year, and spotters **Larry Goff** and **Brad Bjerke**, all with Cat Auction Services.

**Eric Draper**, ESCO Service & Supply, not only helped as our Auction Committee Chairman this year, but donated up to \$5,000 in ESCO supplies or service. At the end of the auction, ESCO offered to match the donation, which resulted in a \$9,200 addition to the scholarship account. **THANK YOU, ESCO!!**

**Hank McCabe**, who purchased the Bronco tickets, is going to be unable to attend the game. His tickets are for sale at his bid price of \$525. The game is on 8/29/13 at 7 p.m. against the Arizona Cardinals. These seats are located in Section 343, Row 4, Seats 13–16, which are club level seats, and it does include a parking pass. Peyton may get the Broncos to the Super Bowl this year (according to **Pete Niemann**), so this is a great opportunity! Please contact the **RMCMI** office if you are interested.



### Silent Auction Donors

ACZ Laboratories  
Tom & Karen Bailey  
Bob Bartosh  
Summer Belden  
Chesley Blevins  
Cat Auction Services  
Coal People  
Judy Colgan  
Denise Dragoo  
ESCO Supply & Service  
Derrell Ezell  
Robert Gentry  
Christiana Hancox  
Randy Hartley  
Jackson Kelly  
Jackson Lake Lodge  
Keystone Lodge  
Lyntek, Inc.  
Ken & Kathy Miller  
Clark Moseley  
Rock Resorts  
Root Sports  
Phil & Christi Schmidt  
Steamboat Sheraton  
Taylor Mine Services &  
David Brown Gear Systems  
Vail Marriott

### Silent Auction Winners

Jodie Aberle  
Matt Arviso  
Brad Bjerke  
Brad Brown  
Trent Colgan  
Judy Colgan  
Ron Destefano  
Denise Dragoo  
Eric & Karla Draper  
David & Cheryl Evans  
Bill Fewless  
Robert Gentry  
Larry Goff  
Randy & Barb Hartley  
Dean Jacot  
Denny & Trish Kingsley  
Randy Lehn  
Hank McCabe  
Taylor Murray  
Dakota Coal  
Steve Nye  
Matt Palmer  
Bob Pasley  
Robert Pestreich  
Les Presmyk  
Don Schwartz  
Erik Strom  
Jane Thomas  
Jamie Torske  
Westmoreland Coal



# Golf Tournament – June 23, 2013 – Rollingsstone Ranch Golf Club

1st Place – Tim VanWyngarden, Tom Cooke, Jim Godfrey, Robert Evans  
2nd Place – Eric Draper, Bill Taylor, Gary Anderson, Jim Schulz  
3rd Place – Phil Schmidt, Christi Schmidt, Mike Ludlow, Rebecca Ludlow  
15th Place – Clark Moseley, Butch Wright, Gordon Shinkle, Mike Meredith  
Last Place – Wendy Hutchinson, Kelly Hardy, Jamie Torske, Kathy Miller  
Men's Longest Drive – Mike Nasi  
Women's Longest Drive – Jamie Torske  
Men's Closest to the Pin – Ron Destefanao  
Women's Closest to the Pin – Christie Schmidt

Congratulations to all, it was a great day of golf on a beautiful course!



## Hole Sponsors:

ACZ Laboratories  
Cate Equipment  
Colorado Mining Association  
Dakota Coal Company  
Downing Teal  
Dyno Nobel, Inc.  
Golder Associates  
Joy Global  
WESTECH

Lyntek, Inc.  
McLanahan Corporation  
Millcreek Engineering Co.  
Peabody Energy  
Phillips  
Roche Engineering  
Wagner Equipment  
Warren Transport, Inc.  
Worley Parsons



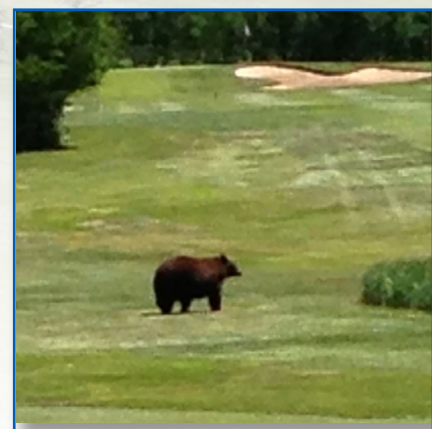
## Golf Prize Donations:

Jack Atwater, Dyno Nobel  
Mark Compton, Utah Mining Assoc.  
Derrell Ezell, Westmoreland Coal  
McLanahan Corporation  
Robert Richens, Joy Global

Bob Bartosh, Dakota Coal  
Tom Durham, Westmoreland Coal  
Hank McCabe, Chevron Mining  
Pete Niemann, AIL Mining/Big R Bridge  
Tim VanWyngarden, ACZ Laboratories

A special thanks to **Millcreek Engineering** for the goodie bags with golf balls, sunscreen lip balm provided to each player, and for the hole in one contest! Thank you all so much for your contributions in making this a great event!

Many thanks to **Bruce Lindsay**, Golf Chair, for his efforts in putting the pairings together and helping to manage the event.



We had an extra player on the course, we heard he "bearly" made the cut!



## Minutes of the Annual Membership Meeting, June 25, 2013

**President Brad Lewis** called the meeting to order at the closing luncheon of the Rocky Mountain Coal Mining Institute's 109th Conference and Annual Meeting held at the Steamboat Sheraton Resort in Steamboat Springs, Colorado. The purpose of the annual meeting is to inform members of the status and activities of the Institute during the year. The minutes of the previous meeting were approved as published in the 2012 Post-Conference newsletter. Brad reviewed the accomplishments of the committees this past year:

59 members were added to date this year.

**David and Cheryl Evans** continue to do an outstanding job as co-chairs of the Mine Rescue program. Ten teams participated this year. The Newmont teams that were committed to come had to drop due to company travel restrictions. The program included a new class this year with a confined space trailer. "*Guts and Gore*", a popular class from last year that involves respiration techniques on pig hearts and lungs, was repeated and very popular with the group.

**Bruce Lindsay**, Golf Chair, continues to make the **RMCM**I golf tournament a huge success. We had 94 golfers participate this year. \$1,320 in mulligans were sold at the tournament to benefit the scholarship fund.

**Curt Moseley** continues as our Patron Chair, and has done a great job in bringing new contributors to the program his year. The silent/live auctions raised almost \$20,000 this year, and continue to be popular.

**Curt Belden & Bob Burnham** review the scholarship applications and interview the potential scholars. This year there were 26 engineering applications and 27 technical applications, which increased their duties considerably. Eight engineering/geo scholarship awards and ten technical school awards were given this year. We thank them for their efforts and welcome their continued management of the scholarship applications and promotion of our program at the various schools.

The technical sessions were well attended on both days, due to the outstanding quality of speakers and positive topics. We are encouraged to weather the storm of attacks on the industry.

**Bob & Kathy Burnham** did an outstanding job in securing the volunteers for the Welcome Committee. Thank you to all the great volunteers who help this year, you did an amazing job!

**Brad Lewis** gave a recap of the financial report.

The following nominations were voted upon:

**Bruce Lindsay** – President Elect

**Ron Destefano** – Board Member

**Denny Kingsley** – Regional Director

With no nominations from the floor, the above positions were filled as presented to the membership.

**Brad Lewis** passed the gavel to **Tom Durham**, who announced his theme for next year will be "**The Western Coal Miner – Not an Endangered Species**".

**Scott Sturm**, Westmoreland Coal, won the drawing for two free "A" packages to next year's conference in Keystone, Colorado.

**Tom Durham** presented **Brad Lewis** an engraved gavel in appreciation for his service as President.

Having no further business to come before the membership, the 109th Annual Meeting was adjourned.

Respectfully submitted,



**Judy Colgan**  
Corporate Secretary



## **“Proudly Promoting Western Coal”**

When the bear crossed the fairway during the golf tournament, **Tom Durham** and **Joe Micheletti** did some quick calculations and were debating whether a Callaway 5 degree driver or a Ping 3 iron would provide the most protection. Being unable to come to an agreement, they asked our RMCMI golf legend what he was going to use and he responded, “A Switch”. **Bruce Lindsay**, Arch Coal

My wife and I adopted a 6 year old child from a third world country. Upon arrival in the US, I had to carry him through our airport. He weighed 36 pounds. Today, he is 22 years old, a US Marine and has been awarded 2 medals. A reliable source of electricity is one of the major reasons for the dramatic change in how this child's life started and where it is today. Electricity is vitally important in the beginning and ending of life. Reliable electricity results in lower infant mortality rates and longer life spans. Regarding electricity, the world needs - Everything, Everywhere, All the Time. **Frank Clemente**, *Professor Emeritus*, Penn State University

Industrialization in the United States took 70 – 80 years. China will likely industrialize in 20 – 30 years. The greatest crisis the world faces in the 21st century is how to bring the world out of poverty. There is a perfect correlation between GDP growth and coal use. A single large scale coal plant built with the latest technology is the equivalent of taking 1 million automobiles off the road. Let's get on with it by empowering people and economies. Let's be fact based and forward looking and demand a pro electricity regulatory environment that keeps energy affordable.

**D.L. Lobb**, *Chief Operations Officer-Americas*, Peabody Energy

We look at our business through the lens of our customer. The main messages from our customers are: Safe – Clean - Affordable - Reliable. We are not running to natural gas, we are taking advantage of a window of opportunity. Coal and nuclear have been and will continue to be the work horse fuels for Southern Company. However, we intend to use all the arrows in the quiver. A diversified approach is the right way for anything.

**Mark Crosswhite**, *Chief Operating Officer*, Southern Company

The first responsibility of a leader is to describe reality. One reality that we seldom hear about is that Apple, Google and Facebook are moving their server farms to North Carolina because of the low cost / reliable electricity that is being generated primarily from coal fired power plants. **Jason Hayes**, *Communications Director*, American Coal Council

Mega construction projects around the world face similar challenges. Cost and scheduling have and will always be key issues. Issues that are becoming of increasing concern are safety, quality, corruption, technology. It is essential to prioritize the customer defined project attributes that can add measurable value. **Joseph Nuccio**, *VP Americas-Minerals*, KBR

Am I a person who will take an occasional risk thinking I will get away with it? Do the people who matter most in my life think I will take an occasional risk? Risk never takes time off. Managing risks is one of the most difficult things we will ever do – more difficult than production, maintenance or budgets. Those who manage risks well are generally the most successful in all aspects of whatever they endeavor to do.

**Gary Leaming**, *Safety Manager*, Sufco Mine, Canyon Fuel Company, Arch Coal

Why did we choose Behavior Based Safety (BBS)? Everything else failed. BBS is a worker designed process and that is the key to its success. BBS also provides workers with transparency of management's actions. For example, everyone is provided with a report on the actions items arising from pre-shift inspections (i.e., what is fixed within 24, 48, 72 hours). 80% of the issues are fixed within 24 hours. Incorporate safety within all the business processes rather than having it as a check box exercise. **Kent Salitros**, *President*, Western Energy Company

By 2015, coal will surpass oil in world energy consumption. The United States has 27% of the world coal reserves. Colorado is second in federal coal royalty payments (\$59 million and half of this comes back to the Colorado public schools). A 1948 Roper Study concluded the coal industry had to improve its image. We are running out of time to educate the public. **Stuart Sanderson**, *President*, Colorado Mining Association

The Genesis of Friends of Coal occurred at a West Virginia Coal Association meeting with a long time coal executive (Warren Hylton) making the claim “ We have a lot of Friends out there who will help us if we ask them.”

**Bill Bissett**, *President*, Kentucky Coal Association



In 2008, Friends of Coal caught fire in Kentucky. To date, 70,000 Friends of Coal license plates have been sold in Kentucky and FOC receives \$10 from each sale. These proceeds are split evenly between scholarships and promotion. In 2012, a summer scout camp on a reclaimed mine site hosted 400 inner city kids and they were taught about mining. Friends of Coal gave away a free semester at the University of Kentucky for the student who could hit a half court shot during halftime show. We are always on the lookout for community based events / activities where we can promote FOC. Sometimes it is as simple as passing out Friends of Coal stickers at the fair.

**David Moss**, *Vice-President*, Kentucky Coal Association

There is no reason why RMCMI should not take on the Friends of Coal initiative. My experience has been the biggest resistance to rolling out FOC comes from the type of people who are in this room. The miners, spouses and community people embrace it. Why is RMCMI not doing this? **Brian Patton**, *President*, James River Surface Mining

The cross state air pollution rules will cost a tremendous amount of money and are fatally flawed scientifically. However, our biggest threat is Greenhouse Gas Regulations which make it impossible to build a new coal fired power plant in the US without carbon capture sequestration and this technology is too expensive to be commercially viable.

EPA opts to use modeling, projecting and regression analysis as a basis for their rule making. They do not take into account the results of clinical studies that are tracking reality based facts/figures relative to population illnesses. This faulty public health decision making is disarming our economy and giving it to horrible polluters such as China.

**Mike Nasi**, *Partner*, Jackson Walker, LLP

Millennium Bulk Terminals update:

Stage 1 25 mtpy 2 docks 5 train parking space \$400 million

State 2 44 mtpy \$600 million

All polls show 2-1 support for the project.

Key messages are: Family Wage Job, Tax Revenues, Exports, Trade.

Initial permit submittal was February 2012. First shipment expected in 2017.

**Ken Miller**, *President & CEO*, Millennium Bulk Terminals

The coal industry is 25 years behind the 8 ball relative to public relations. We must constantly tell our story to build trust and it has to be:

1. **Positive**
2. **Plain & Simple**
3. **Supported by Facts**
4. **It's Not About You – It's About Your Audience**

One of our recent polls show that 92% of the people surveyed believe you can create jobs and protect the environment. **Bruce Gryniowski**, Gallatin Public Affairs

Two major mining projects in Peru had their permits blocked by people who were not even near the mines but were motivated via social media. Social media allows for very tiny groups of people (and they are not skilled PR experts nor do they have big money) to motivate large groups. A mining company's presentation is edited by their respective PR groups, attorneys and executives. As such, it is not effective at motivating large groups.

Social media is distinctly different in that it is about listening first and then communicating. The value of social media content is enhanced from the user's information (i.e., what they read, how long they read it, etc). It is a conversation – not a monologue.

The attributes of social media are loyalty, passion, trust and interaction which results in a motivated army directed in strategic strikes. **Dr. Sean Dessureault**, *Associate Professor*, University of Arizona



The Oxbow/Aspen methane gathering and utilization project was 16 years in the making. In short, methane is recovered from the Oxbow underground mine and used to fuel a generator that provides a portion of the power to the Aspen Ski Resort. The net environmental impact is the equivalent of removing 91,000 automobiles from operation.

**Mike Ludlow**, *Executive Vice President*, Oxbow Mining, LLC

I want to publicly thank Xcel Energy and CDG Engineers for the professional manner in which they made the options for their rail line connection available and understandable to our community and selected the option the community thought best. Additionally, I thank them for their genuine spirit of cooperation in constructing a rail line and coal handling facility that fits well with the Hayden community as well as their business.

**Diane Mitsch Bush**, *Routt County Commissioner* during permitting phase, currently a *Colorado State House Representative*.

If you are not having fun, then it's not working. Let the "bummers" go and focus on the "Whoo-hoos". The best way to reduce stress is to be great at what you do. Learn the Game, Play the Game and Change the Game. Luck is preparation meeting opportunity. **Tim Gard**, *Humorist*

I would love to get a haul truck for my birthday. All the people I have met and heard from in Steamboat reaffirm my decision to become a mining engineer. **Ashlyn Hooten**, *Scholarship Winner*, University of Arizona

Why am I choosing the coal industry? I was going to be a gold miner – but it did not pan out! On a more serious note – I love chemistry this led me to a mine tour and that is what convinced me to become a mining engineer.

**Alyssa Brown**, *Scholarship Winner*, Colorado School of Mines

Industry working experience has allowed me to outgrow my tortoise in the sandbox views relative to the opportunities in mining. **Joey Micheletti**, *Scholarship Winner*, Montana Tech

My passion is robotics. I want to apply these skills and passion in the mining industry to reduce injuries and lower costs. **Kaitlyn Martin**, *Scholarship Winner*, Colorado School of Mines

I am amped about my involvement in developing a curriculum to promote mining to middle school students. At my college orientation, there were approximately 300 – 400 students. Of those, 4 went to the mining orientation. There are so many opportunities in mining (surface / underground, coal / non coal, US / outside US).

**Kendal Bergman**, *Scholarship Winner*, University of Utah

The Co-Op experience was a great choice. I was able to experience first-hand the manual labor, engineering design as well as the engineering application associated with my welding engineering degree.

**Blake Parks**, *Scholarship Winner*, Ferris State University

I woke up this morning with the song "Red Solo Cup" repeating in my head. **David Evans**, Westmoreland Coal

P.S. Here is a tip for you David: after a grand night of karaoke that included Cheryl singing her heart felt rendition of "I Will Always Love You" and your buddies singing "Red Solo Cup" - If you are going to make a public comment the morning after, don't choose Red Solo cup!

When I am working in my home office, I take a break around 11 AM to waltz with Charlene. One of our favorite songs is Anne Murray's, "Could I Have This Dance for the Rest of My Life". **Bill Kendall**, J. H. Fletcher

## Sunday Activities

In addition to our annual golf tournament, participants enjoyed many other activities on Sunday. A cooking and wine pairing class was presented by one of the Sheraton's chefs, some enjoyed Strawberry Hot Springs or tubed the Yampa River, and others went to 3 Quarter Circle Ranch for clay shooting.





## Closing Luncheon

*Sponsored by Arch Western Bituminous Group & Thunder Basin Coal*



Brad Lewis chaired the RMCMI Annual meeting. Elections were held for the 2013-2014 officers and board members, and a financial report was given to the membership. This information is included in the minutes of the annual meeting, included in this newsletter.



Brad passed the gavel to 2013-2014 President, Tom Durham, Westmoreland Coal. Tom reminded us that man has yet to find, invent or produce something so essential to our lives as coal. Today, some Americans want us to be an extinct



species, but the coal industry is a great career choice with a great future. Tom has chosen “**The Western Coal Miner – Not an Endangered Species**” as his theme for our conference in Keystone, Colorado next year.

**Scott Sturm**, Westmoreland Coal Company, won the drawing for the two “A” packages to the conference next year.

**Tim Gard**, nationally recognized humorist, closed out the conference with a message to use our comic vision to handle our daily challenges. He encouraged us to take companies and employees to the next level of success by learning to harness and apply the awesome powers of humor. The ability to generate laughter is often the missing business skill that makes the difference between a solidly productive and cooperative team, and a sluggish and grumpy one.



All appreciated the opportunity to spend the last few days networking with colleagues, renewing their commitments to the industry, and connecting with friends and family in a beautiful mountain setting.

## Life Member Award Presentation



**Thomas Lien** was bestowed the RMCMI life member award this year. Tom has 48 years of service to the mining industry, and has been involved in RMCMI for the past 30 years. He has been and remains an active and vocal proponent of Western Coal. Tom never lets an opportunity pass to influence opinion, educate and advocate in behalf of coal and western coal's importance and place in the energy equation of this country and this world. This includes the entire gamut from testifying in Congressional committees to his recent joint presentation with his 9 year old grandson, Oliver, to the third grade class about mining coal in the Powder River Basin.

Tom is currently working as a private consultant and for **Behre Dolbear** evaluating mineral investments for worldwide clients. He has participated in projects in the UK, US, Canada, Columbia, Ukraine, Mongolia and Kosovo.

Tom joined Rocky Mountain Coal Mining Institute in 1983. Shortly thereafter he was elected to the Board as representative from Wyoming has subsequently held many positions in the Institute. Tom was president in 1997-1998, and the annual meeting was held in Snowmass. Over the years he has attended every yearly meeting, presented on the program any number of times and faithfully and visibly represented the interests and goals of RMCMI in the mining community and community at large. He has been a Patron of the Institute for many years.

He is also an active participant and member in **Denver Coal Club** and **Colorado Mining Association**.

In 2008, he was recognized by the **Society of Mining Engineering** with the **Howard N. Eavenson Award** for innovative and creative work during his career in large surface mine technology applications and development of state of the art participative management practices.

Tom's family includes four children - **Deirdre**, **Siobhan**, **Maeve** and **Jeffrey**, each of whom attended multiple RMCMI summer meetings, and four grandchildren - **Liam**, **Gavin** and **Meredith Page** and **Oliver Fell**.

# Sponsors of the Institute

*The Rocky Mountain Coal Mining Institute is a 501(c)(3) organization and as such relies on contributions and membership investments to support the various Institute programs. We sincerely thank those who continue to support the Institute and welcome additional sponsors who wish to help Promote western coal through education.*

## Headline Sponsors

**Caterpillar Dealers: Butler Machinery, Empire Machinery,  
Wagner Equipment, Wheeler Machinery, Wyoming Machinery  
Dakota Coal**

**Founder's Sponsor  
Roberts & Schaefer**

### Mine Rescue Sponsor

North American Coal Corp  
Strata Worldwide - Breakfast  
Westmoreland Coal Co. -  
Luncheon

### Short Course

Joy Global

### Registration

Colorado Mining Association  
J.H. Fletcher & Company

### Golf Sponsor

Phillips 66

### Welcome Reception

Millcreek Engineering  
PacifiCorp  
Savage Services

### Safety Awards

ADDCAR Systems

### Coffee Breaks

AIL Mining  
Atlas Copco  
Jackson Walker

### Scholarship Luncheon

Peabody Energy Co.  
Rimpull Corporation  
Salt River Project  
Trapper Mining, Inc.

### Mine Rescue Luncheon

Westmoreland Coal Co.

### Monday Night BBQ & Entertainment

Cloud Peak Energy  
DSI Underground Systems, Inc.  
McLanahan Corporation

### Closing Luncheon & Annual Meeting

Arch Western Bituminous Group

### AV Sponsor

Phillips

### General Conference Sponsor

Cate Equipment  
Colowyo Coal Company  
HIIG Energy  
John T. Boyd Company  
Nelson Brothers  
Norwest  
Snell & Wilmer

### Website Sponsor

Murray Energy

### Golf Hole Sponsors

ACZ Laboratories  
Cate Equipment  
Colorado Mining Assn  
Dakota Coal Company  
Downing Teal  
Dyno Nobel  
Golder & Associates  
Joy Global  
Lyntek, Inc.  
McLanahan Corporation  
Millcreek Engineering  
Mill Man Steel  
Phillips  
Roche Engineering  
Wagner Equipment  
Warren Transport, Inc.  
WESTECH  
Worley Parsons



# Thank you to our generous Scholarship Program Sponsors

We thank the individuals and companies who continue to support the RMCMI Scholarship Program. Please encourage your colleagues and friends to participate in this outstanding opportunity. The selected students not only receive a \$5,500 tuition credit over two years, but also receive a free trip to the Annual Meeting & Conference. Technical scholars receive \$1,000, for those hoping to work in the industry in a technical field. Please help RMCMI continue this important program that has already given over \$630,000 to student education. **Don't forget to ask your companies to match your personal donations!**



## **Diamond + (\$3,000-\$4,999)**

Roberts & Schaefer Co.

## **Diamond (\$1,000-\$2,999)**

Dakota Coal Company

Denise Dragoo

Russell & Rose Hardy

JH Fletcher

Joy Global

Bruce and Dee Lindsay

Magnum Metals, Inc.

McLanahan

Millcreek Engineering

Ken & Kathy Miller

P&H Mining

Clark Moseley

Pete and Carole Nielsen

Rimpull

Schwabe Williamson & Wyatt, PC

Wyoming Cat

## **Anthracite (\$750-\$999)**

Gary & Linda Skaggs

## **Bituminous (\$500-\$749)**

Bob Bartosh

Bob and Kathy Burnham

Brad & Connie Lewis

Jim Mattern

Millennium Bulk Terminal

Ed & Barbara Pettigrew

Robinson Transport

Wagner Cat

## **Sub-Bituminous (\$250-\$499)**

Tom Bailey

Richard Bate

Curt Belden

Brad Bjerke

Coteau Properties

Alan Czarnowsky

Tom & Pam Durham

Robert Evans

Dean Honey

Thomas & Mary Olive Lien

Joe & Jenny Micheletti

Mill Man Steel, Inc.

Nelson Brothers Mining

Richard Parkins

Peabody Energy

Kent Salitros

Randy Schwandt

Dave Smaldone

Gary and Barbara Stubblefield

Texas Westmoreland Coal Co.

Trapper Mining Inc.

Western Energy

Western Fuels

David & Sarah Wolach

James Wright

## **Lignite Level (\$10-\$249)**

Bill Balaz

Summer Belden

Beth & Jon Coen

Eric Draper

Thomas & Lois Egan

Doris Finnie

Dean Jacot

Darryn Kamae

Catherine Kerns

Bob Kulina

Ta Li

Hank McCabe

National Environmental Services

Dionne Oman

Albert Putzig

Bill Reid

Gary Rivenes

Standard Laboratories, Inc

## **RMCM I WELCOMES NEW MEMBERS!** *Members Joined Since 1/1/2013*

**Randy Acre**

New Elk Coal Company, LLC  
Colorado Springs, CO

**Kris Mele**

Golden West Industries  
Price, UT

**Gary Andersen**

ESCO Supply and Service  
Bismarck, ND

**Jim Miller**

Martin Engineering  
Neponset, IL

**Elden Antonio**

Gallup , NM

**Daniel Munoz**

Western Energy Co  
Colstrip, MT

**Tyler Barth**

The Coteau Properties Company  
Beulah, ND

**Joseph Nuccio**

KBR  
Sandy, UT

**David Burkhard**

BHP Billiton New Mexico Coal  
Aztec, NM

**Carl Openshaw**

ESCO Corporation  
Billings , MT

**Jenny Bush**

Golder Associates  
Lakewood, CO

**Albert Putzig**

Public Service CO of New Mexico  
Albuquerque, NM

**Braden Colbert**

Western Energy Company  
Colstrip, MT

**Mark Read**

KBR  
Sandy, UT

**Faron Compton**

Walsh Environmental  
Grand Junction, CO

**Travis Shearer**

KBR  
Sandy, UT

**Don Crank**

Westmoreland Kemmerer, Inc  
Kemmerer, WY

**Kathleen Stevenson**

E&E/Walsh Environmental  
Boulder, CO

**Ersin Demirok**

Sabancı University  
City, CO

**Jordan Sweeney**

AE Coal  
Salt Lake City, UT

**James Easter**

Victaulic  
Grand Junction, CO

**Donovan Symonds**

Donovan Symonds LLC  
Park City , UT

**Bill Fewless**

ESCO Corp  
Billings, MT

**Matt Tanner**

HDR Engineering, Inc  
Dallas, TX

**Michael Gust**

Westmoreland Resources Inc  
Hardin, MT

**Craig Tomsett**

County Coal  
Vancouver, DC

**Jeffrey Hannon**

Laramie, WY

**Hadi Torabi**

ASMco  
Tabas, NY

**Karra Hillam**

SEUEPA (Southeastern Utah Energy  
Producers Association)  
Price, VT

**Bruce Truesdale**

Waukesha-Pearce Industries, Inc.  
Houston, TX

**Scott Wagner**

Wagner Equipment Co.  
Aurora, CO

**Al Knapp**

Clean Coal Technologies Inc.  
Bonner Springs, KS

**Bryan Walther**

The Coteau Properties Company  
Beulah, ND

**PC Lauinger**

Geo Products, LLC  
Houston, TX

**Ian Wanner**

ESCO Corporation  
Kilgore, TX

**Richard LiConti**

Eickhoff Corporation  
Pittsburgh, PA

**Michael Wilcox**

Benchmark Industrial Services, Inc.  
Kilgore, TX

**D.L. Lobb**

Peabody Energy  
St. Louis, MO

**Sue Wilson**

Salt River Project  
Phoenix, AZ

**William Marozzi**

Salt River Project  
Phoenix, AZ

**Tony Yoklavich**

Joy Global  
Wellington, UT





---

### Board of Directors

<i>President</i>	Brad Lewis	<i>Regional Director</i>	Summer Belden
<i>President-Elect</i>	Tom Durham	<i>Regional Director</i>	Gary Rivenes
<i>Immediate Past President</i>	Denise Dragoo	<i>Regional Director</i>	Wendy Hutchinson
<i>Administrative Liaison Officer</i>	Bob Bartosh	<i>Regional Director</i>	Rebecca Parker
<i>Advisory Board Chair</i>	Randy Lehn	<i>Regional Director</i>	Ron Destefano
<i>Director</i>	Bruce Lindsay	<i>Executive Director</i>	Judy Colgan
<i>Director</i>	Joe Micheletti	<i>Treasurer</i>	Tarra Williams

---

## Save the Date

# RMCMCI Annual Conference

## Keystone, CO

## June 29-July 1, 2014

Please mark your calendars for the upcoming  
**23 Annual Tri-State Regional Meeting**  
Holiday Inn, Sheridan Wyoming  
**September 11-12, 2013.**

Please contact the office for sponsorship information [www.rmcmci.org](http://www.rmcmci.org)

Additional pictures are located on the website.  
[www.RMCMI.org](http://www.RMCMI.org)